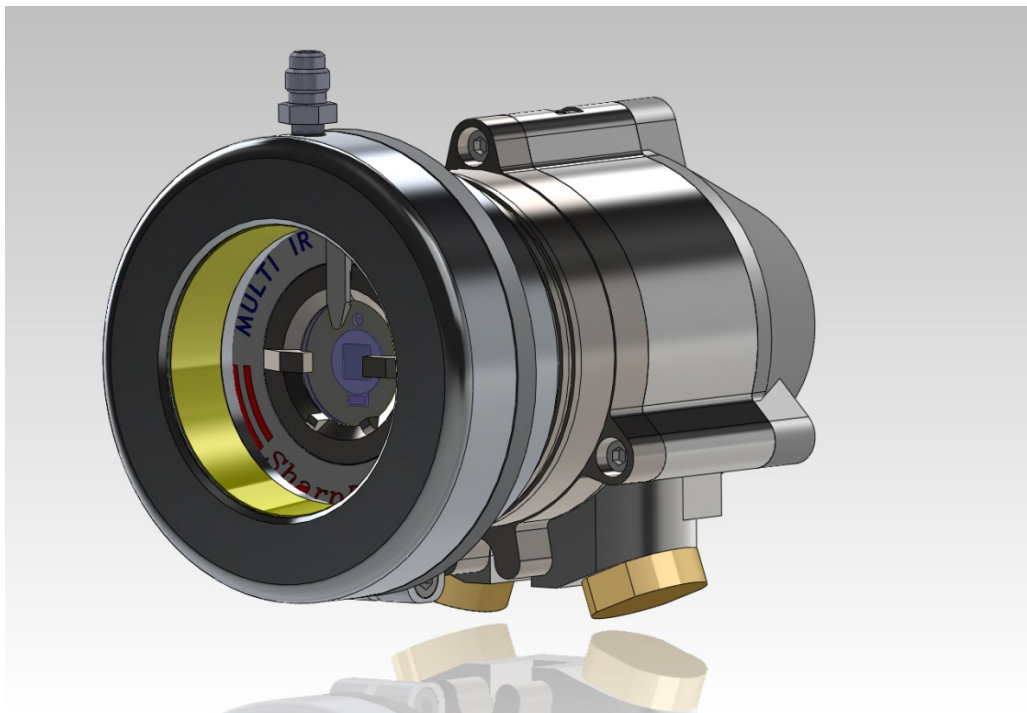


SharpEye™

40/40 Air Shield

P/N 777650

Installation Instructions



Document ref: TM-F-4040Air Shield, Rev (C) August 2013



Spectrex Headquarters: 218 Little Falls Road | Cedar Grove | NJ 07009 | USA
Tel: +1 (973) 239-8398 | +1 (800) 452-2107 (US only) | Fax: +1 (973) 239-7614
Houston: +1 (832) 321-5229 | Europe: +44 (141) 578-0693
E-mail: spectrex@spectrex.net | Website: www.spectrex.net

Release History

Rev	Date	Revision History	Prepared by	Approved by
0	January 2012	First Release	Ian Buchanan	Eric Zinn
1	April 2012	Second Release	Ian Buchanan	Eric Zinn
2	April 2012	Third Release	Ian Buchanan	Eric Zinn
3	August 2013	Forth Release	Ian Buchanan	Eric Zinn

GENERAL DESCRIPTION

This document describes the installation instructions for the Air Shield P/N 777650.

The Air Shield is suitable for use with the SharpEye 40/40 Series Optical Flame Detectors (40/40I, 40/40R, 40/40L, 40/40LB, 40/40L4, 40/40L4B, 40/40U & 40/40UB), for both the aluminum and st.st. enclosures.

The Air Shield is not suitable for use with the 40/40M model.

Optical flame detectors are often used in highly polluted or dirty areas that force maintenance personnel to access the detector frequently to clean its optical window. The special Air Shield, developed for SharpEye 40/40 series optical flame detectors, allows their installation under tough environmental conditions where they may be exposed to oil vapors, sand, dust and other particulate matter.

AIR SHIELD INSTALLATION INSTRUCTIONS

1. Surface Preparation (Figure 1)

- a. Verify that all connection surfaces (1) are clean.
- b. Verify that the lock screw (2) is open. The screw is a captive screw.

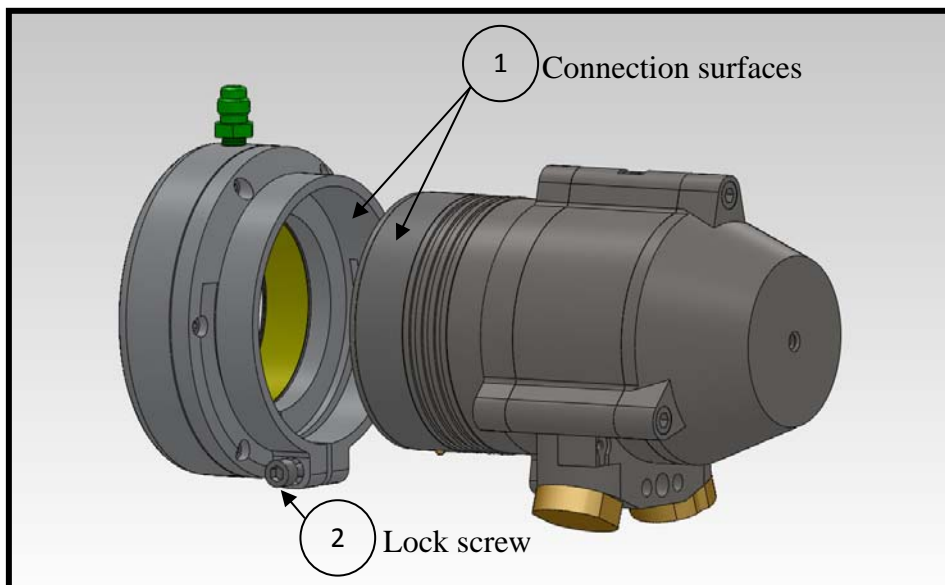
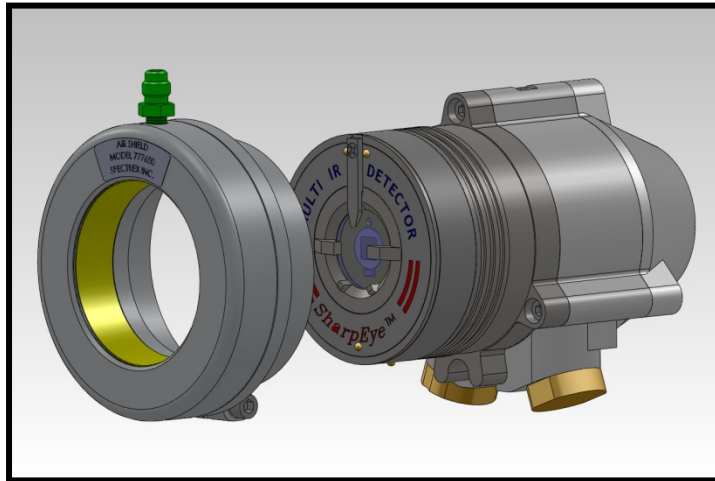


Figure 1 - Surface Preparation

2. Assembly of The Air Shield (figure 2,3)

- a. Assemble the Air Shield (3) on the detector (4).

Verify that the guard (5) fits to the appropriate groove (6).

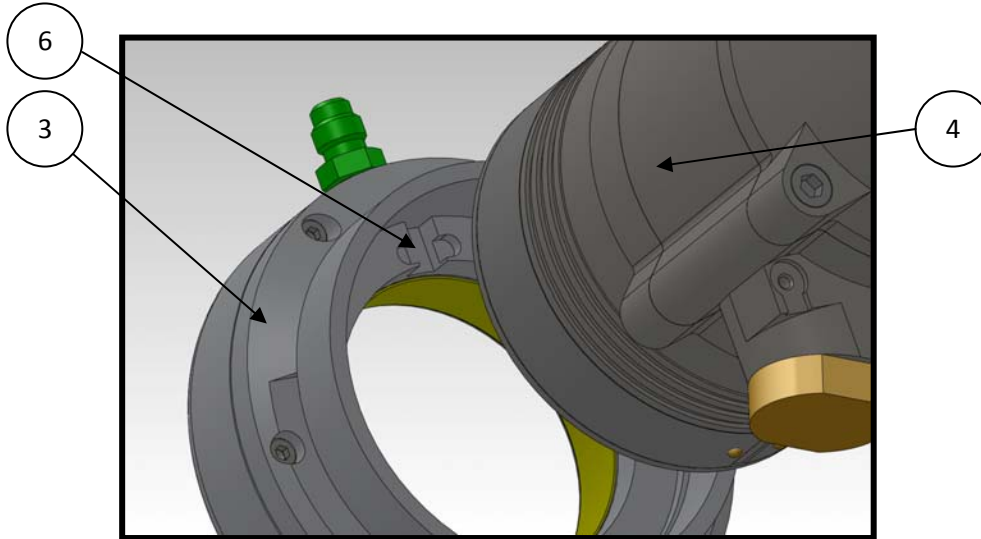


Figure 2 - Assembly of the Air Shield, Rear View

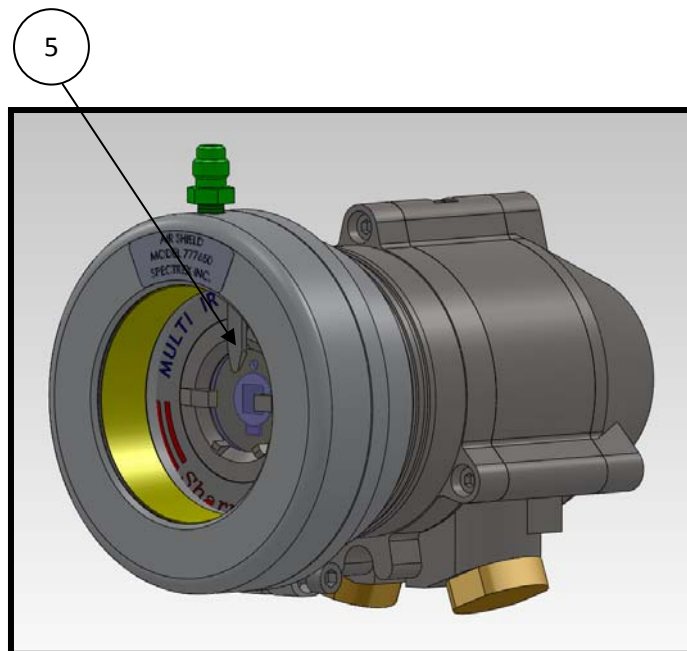
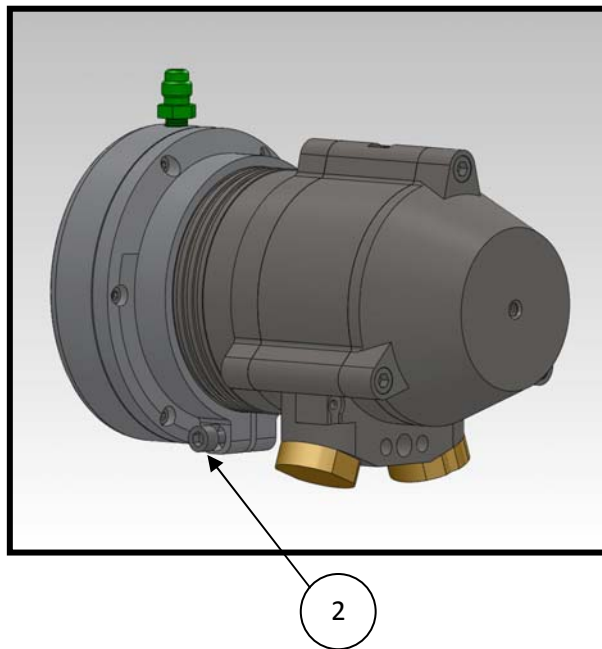
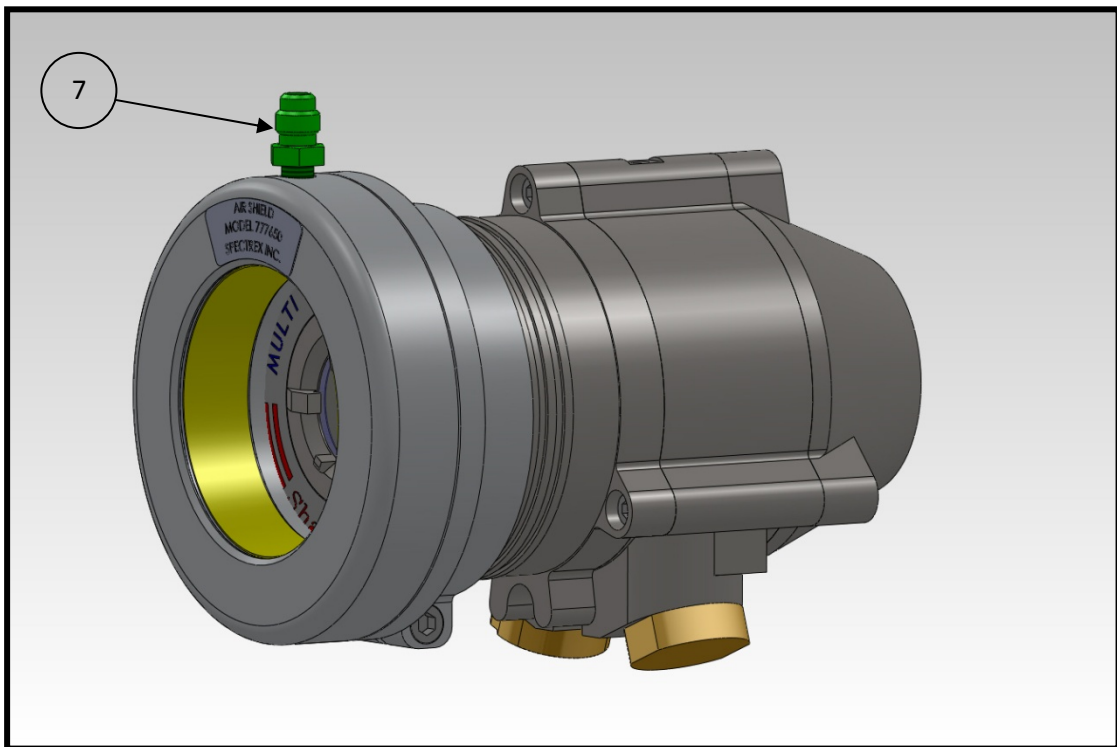


Figure 3- Assembly of the Air Shield, Front View

- b. Lock the screw (2).



- c. The air shield is now mounted. Attach the air pressure hose to the quick-fit air connection (7).



3. Technical specifications:

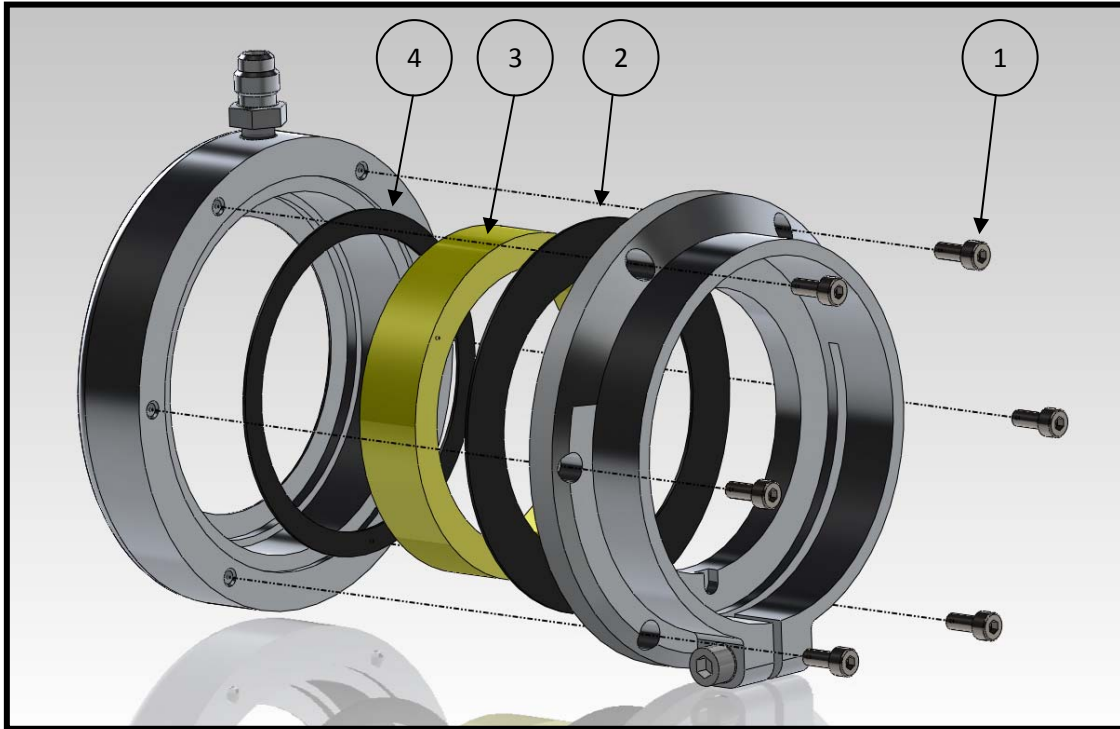
Air pressure source: clean, dry and oil-free air

Pressure: 2-3 bar (30-45 psi)

Fitting: 7/16" – 20UNF-2A

3. AIR SHIELD FILTER REPLACEMENT

- a. Remove the six rear screws (Item 1 - M4 x 10 A4), and open the air shield.



- b. Remove the larger gasket (Item 2 - P/N 777657), and then remove the filter (Item 3 - P/N 777654).
- c. Remove the smaller gasket (Item 4 - P/N 777656), and replace it with a new one.
- d. Mount the new filter into the air shield.
- e. Fit the new larger gasket (Item 2).
- f. Close the air shield and lock the screws (Item 1).

Technical Support

For all technical assistance or support, contact:



218 Little Falls Road
Cedar Grove, NJ 07009, USA

Tel: +1 (973) 239 8398
Fax: +1 (973) 239 7614
Email: spectrex@spectrex.net
Web-site: www.spectrex.net

Your Local Office:

SPECTREX INC.

Texas (USA)

Mr. Jay Cooley, Regional Sales Manager
16203 Park Row, Suite 150
Houston, Texas 77084
USA
Phone: +1 (832) 321 5229
Email: jay@spectrex.net

Europe

Mr. Ian Buchanan, Regional Manager
6 Applecross Road
Glasgow G66 3TJ
United Kingdom
Phone: +44 (0) 141 578 0693
Email: ian@spectrex.net

Far East

Mr. Deryk Walker, Regional Sales Manager
59 Fen Ji Hu, Danshui
Taipei County 25163
Taiwan (ROC)
Phone: +886 2 8626 2893
Mobile: +886 926 664 232
Email: deryk@spectrex.net